

# Hampshire Water Transfer and Water Recycling Project

## Environmental Statement – Figure 8.2 Internationally designated sites within the desk study area

**VOLUME NUMBER: 6**

**PLANNING INSPECTORATE SCHEME NUMBER: WA010002**

**APPLICATION DOCUMENT REFERENCE: 6.3**

**APFP REGULATION: 5(2)(a)**

May 2026

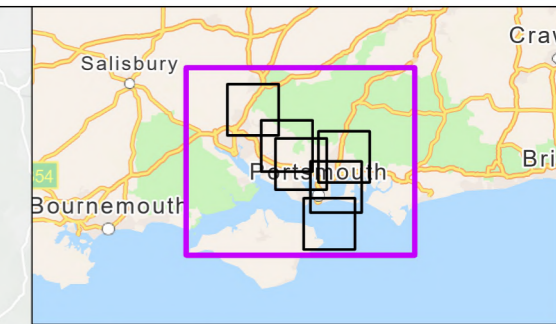
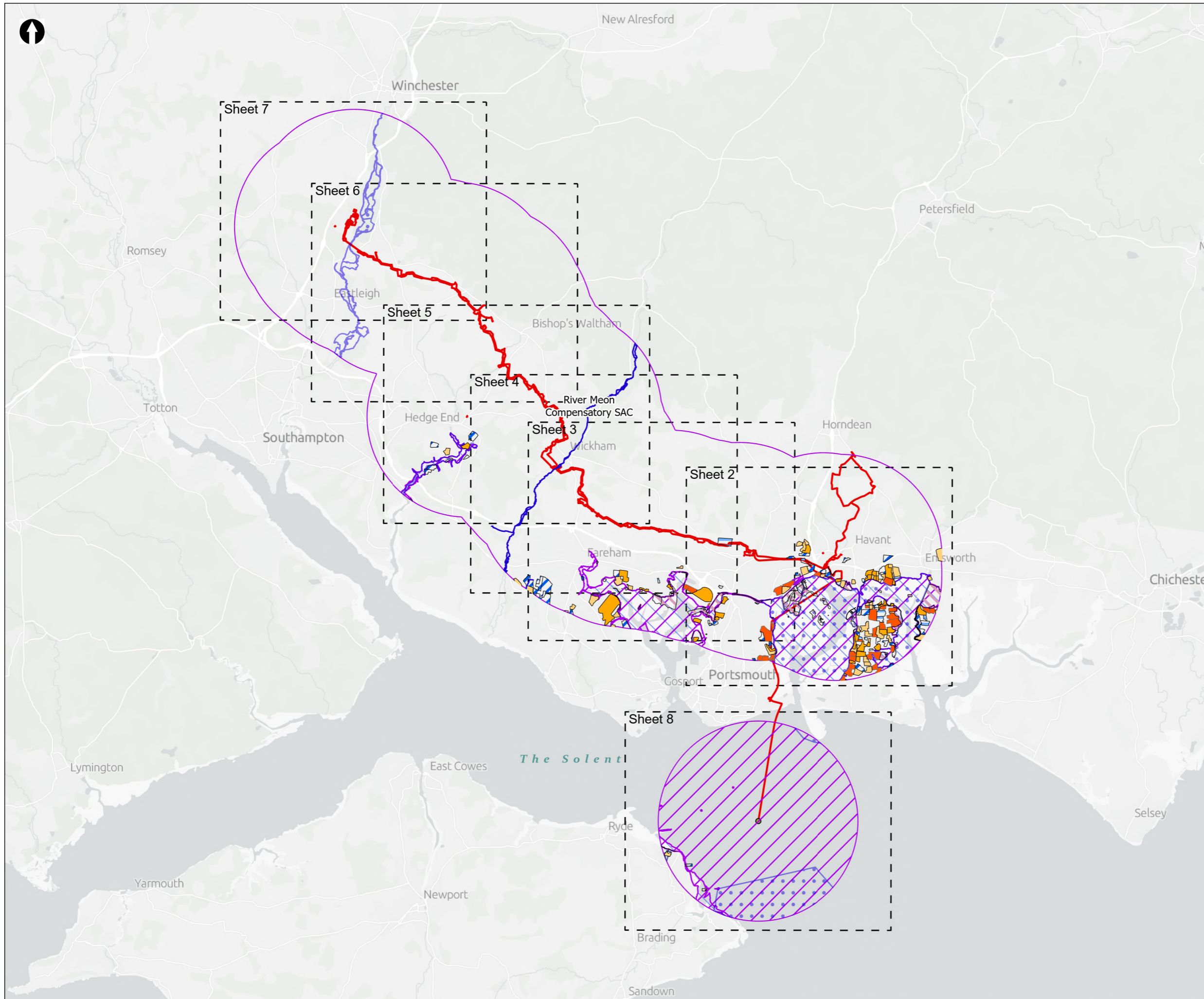
Version 0



from  
**Southern  
Water.** 

The Southern Water logo consists of three stylized, wavy blue lines of varying lengths, positioned to the right of the text 'Southern Water'.





- Order Limits
- Sheet Extent Boxes 1:40K
- Desk study area
- Long Sea Outfall discharge point
- Designated Sites**
- Special Areas of Conservation (SAC)
- Special Protection Areas (SPA)
- Ramsar Sites
- River Meon Compensatory SAC Habitat
- Solent Waders Brent Goose Strategy**
- Core Area
- Primary Support Area
- Secondary Support Area
- SPA Site
- Low Use Site
- Candidate Site

Coordinate system: British National Grid; Datum: OSGB 1936  
 Data sources: © Crown copyright and database rights 2026 Ordnance Survey 0100031673. Sources: Esri, TomTom, Garmin, FAO, NOAA, USGS, © OpenStreetMap contributors, and the GIS User Community, Contains OS data © Crown Copyright and database right 2026. Contains data from OS Zoomstack

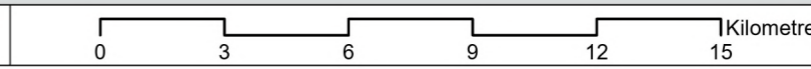
PROJECT TITLE  
 Hampshire Water Transfer and Water Recycling Project

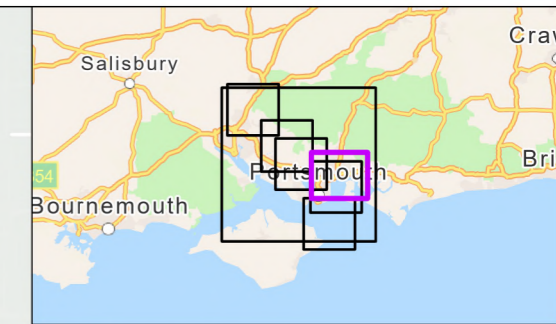
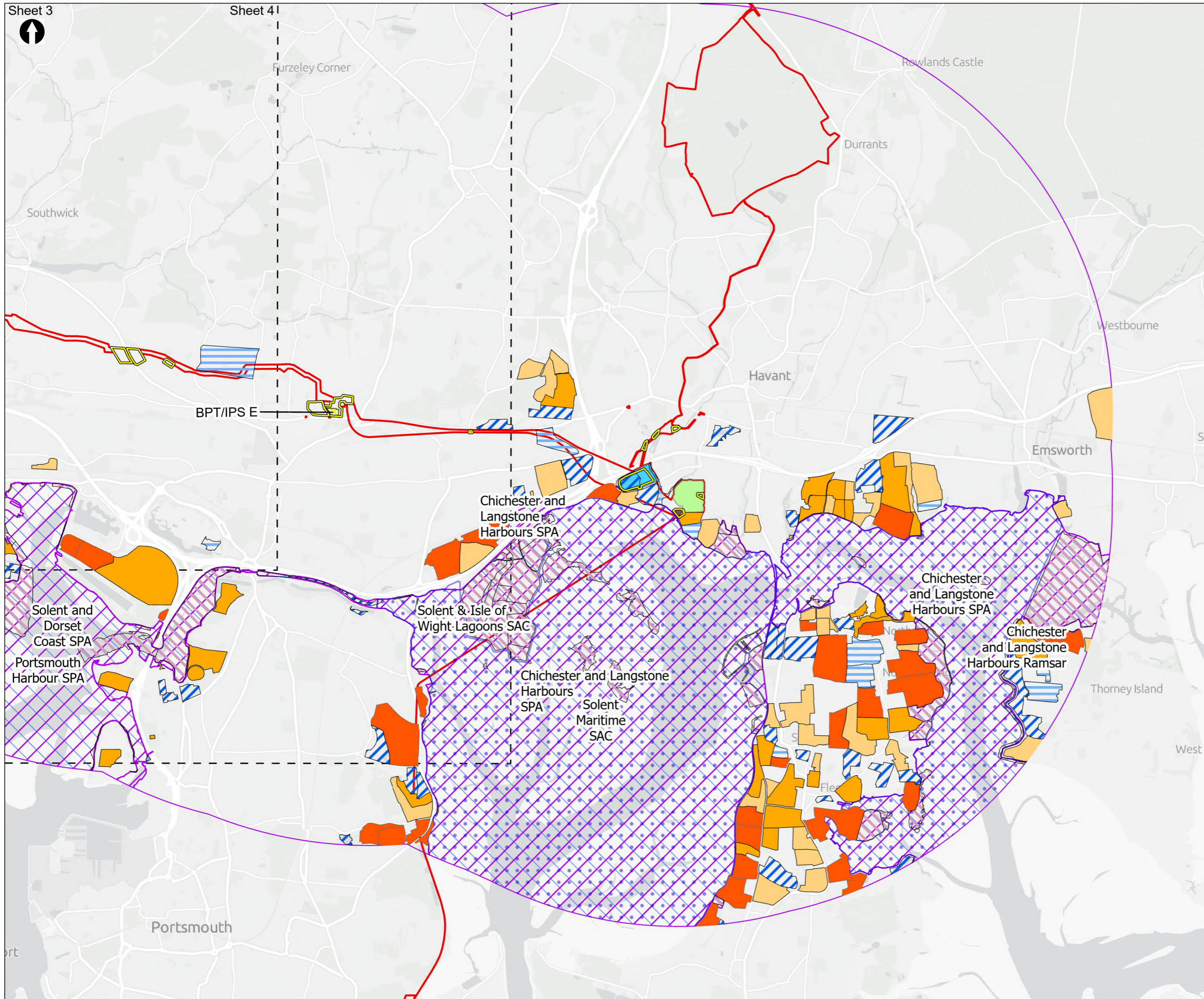


Figure 8.2  
 Internationally designated sites within the desk study area  
 Sheet 1 of 8

Drawn <b>MW</b>	GIS Checked <b>DL</b>	Checked <b>MP</b>	Approved <b>AK</b>
Scale at A3 <b>1:183,000</b>	Status <b>Final</b>	Revision <b>05</b>	Security <b>STD</b>

Drawing Number  
**PC5223-RHD-ES-ZZ-D-Z-0027**





- Order Limits
- Sheet Extent Boxes 1:40K
- Desk study area
- Construction Compounds
- Proposed Development components**
- Budds Farm Wastewater Treatment Works
- Limits of Deviation for Budds Farm Pumping Station
- Water Recycling Plant site
- Above Ground Plant**
- Break Pressure Tank & Intermediate Pumping Station
- Designated Sites**
- Special Areas of Conservation (SAC)
- Special Protection Areas (SPA)
- Ramsar Sites
- Solent Waders Brent Goose Strategy**
- Core Area
- Primary Support Area
- Secondary Support Area
- SPA Site
- Low Use Site
- Candidate Site

Coordinate system: British National Grid; Datum: OSGB 1936  
 Data sources: © Crown copyright and database rights 2026 Ordnance Survey 0100031673. Sources: Esri, TomTom, Garmin, FAO, NOAA, USGS, © OpenStreetMap contributors, and the GIS User Community, Contains OS data © Crown Copyright and database right 2026. Contains data from OS Zoomstack

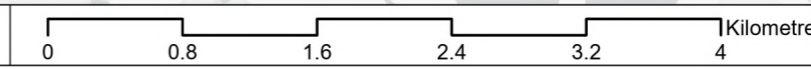
PROJECT TITLE  
 Hampshire Water Transfer and Water Recycling Project

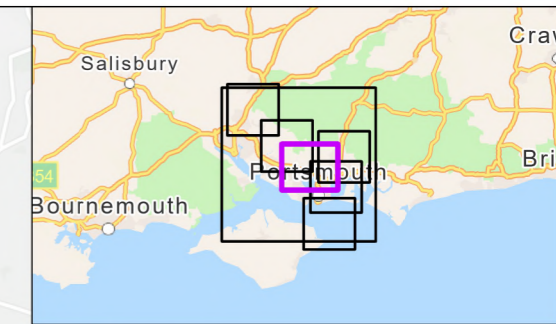
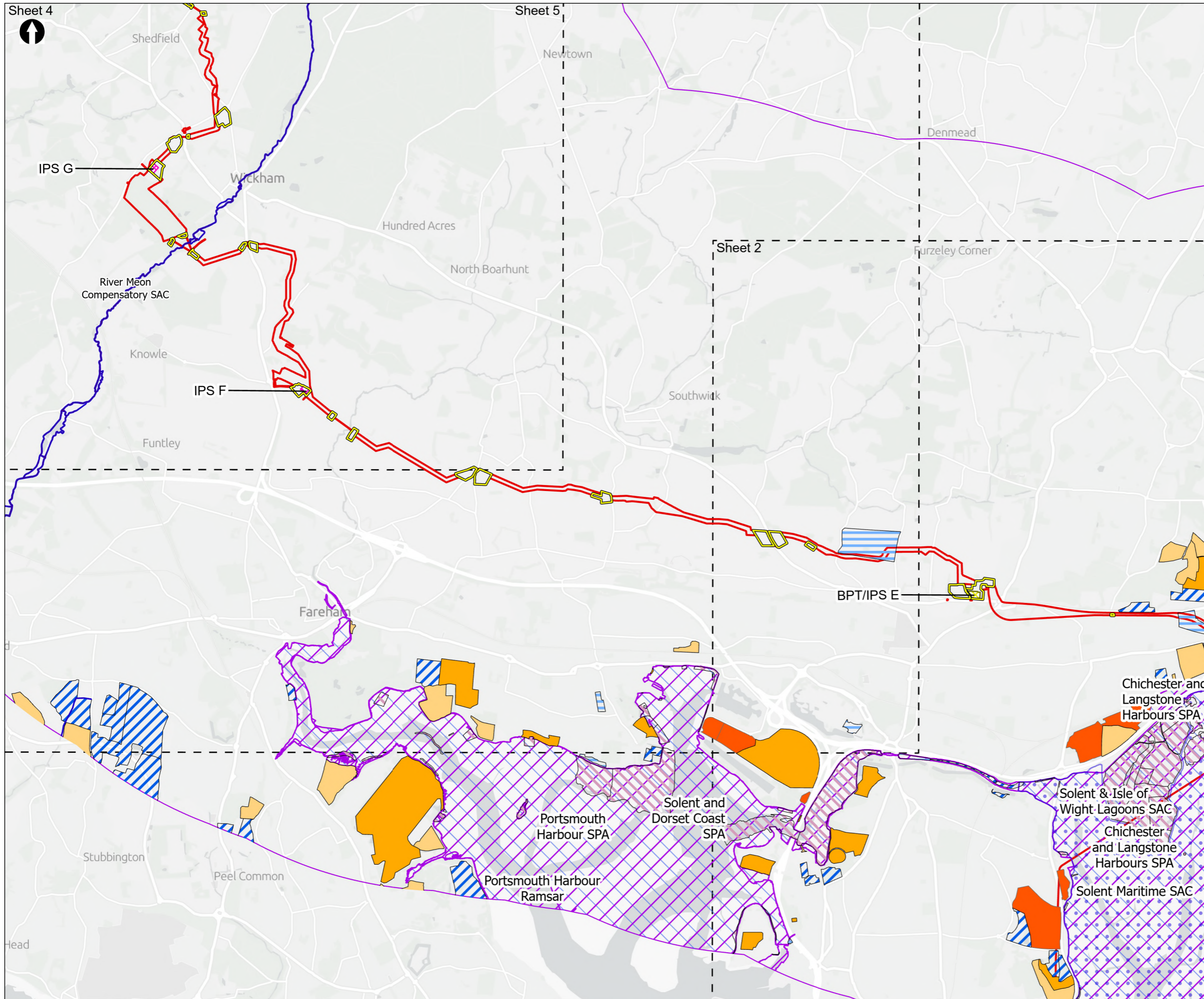


Figure 8.2  
 Internationally designated sites within the desk study area  
 Sheet 2 of 8

Drawn <b>MW</b>	GIS Checked <b>DL</b>	Checked <b>MP</b>	Approved <b>AK</b>
Scale at A3 <b>1:45,000</b>	Status <b>Final</b>	Revision <b>05</b>	Security <b>STD</b>

Drawing Number  
**PC5223-RHD-ES-ZZ-D-Z-0027**





- Order Limits
- Sheet Extent Boxes 1:40K
- Desk study area
- Construction Compounds
- Above Ground Plant**
- Break Pressure Tank & Intermediate Pumping Station
- Intermediate Pumping Station
- Designated Sites**
- Special Areas of Conservation (SAC)
- Special Protection Areas (SPA)
- Ramsar Sites
- River Meon Compensatory SAC Habitat
- Solent Waders Brent Goose Strategy**
- Core Area
- Primary Support Area
- Secondary Support Area
- SPA Site
- Low Use Site
- Candidate Site

Coordinate system: British National Grid; Datum: OSGB 1936  
 Data sources: © Crown copyright and database rights 2026 Ordnance Survey 0100031673. Sources: Esri, TomTom, Garmin, FAO, NOAA, USGS, © OpenStreetMap contributors, and the GIS User Community, Contains OS data © Crown Copyright and database right 2026. Contains data from OS Zoomstack

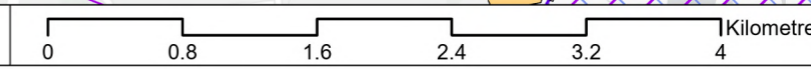
PROJECT TITLE  
 Hampshire Water Transfer and Water Recycling Project

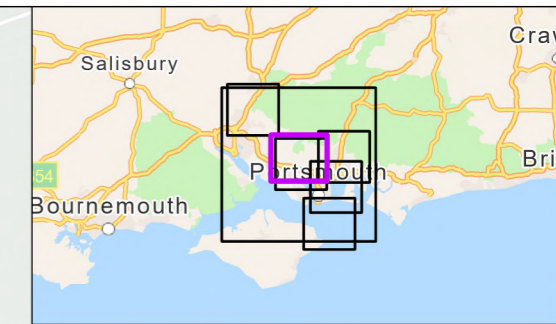
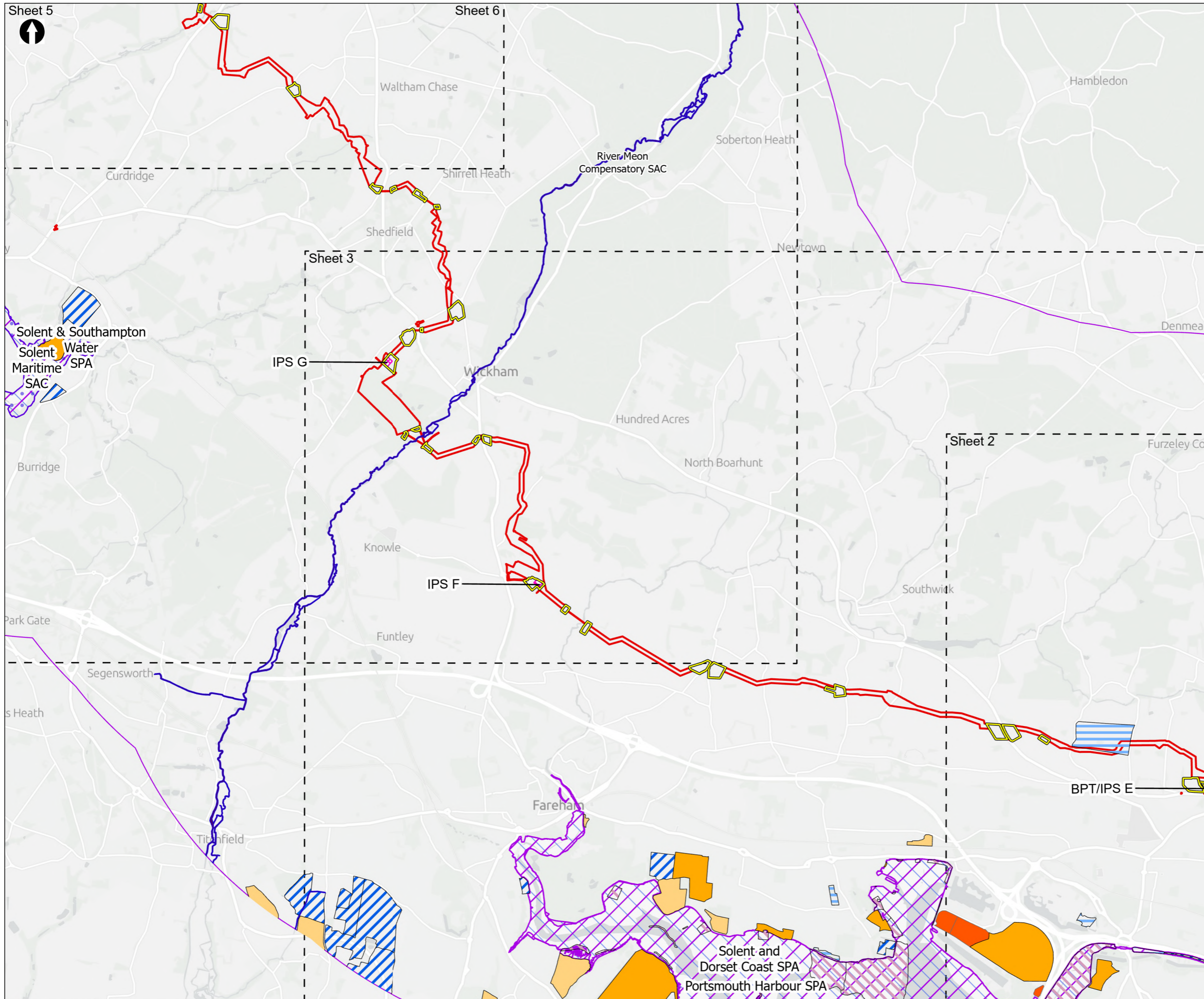


Figure 8.2  
 Internationally designated sites within the desk study area  
 Sheet 3 of 8

Drawn <b>MW</b>	GIS Checked <b>DL</b>	Checked <b>MP</b>	Approved <b>AK</b>
Scale at A3 <b>1:45,000</b>	Status <b>Final</b>	Revision <b>05</b>	Security <b>STD</b>

Drawing Number  
**PC5223-RHD-ES-ZZ-D-Z-0027**





- Order Limits
- Sheet Extent Boxes 1:40K
- Desk study area
- Construction Compounds
- Above Ground Plant**
- Break Pressure Tank & Intermediate Pumping Station
- Intermediate Pumping Station
- Designated Sites**
- Special Areas of Conservation (SAC)
- Special Protection Areas (SPA)
- Ramsar Sites
- River Meon Compensatory SAC Habitat
- Solent Waders Brent Goose Strategy**
- Core Area
- Primary Support Area
- Secondary Support Area
- SPA Site
- Low Use Site
- Candidate Site

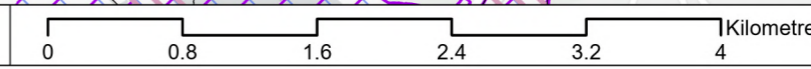
Coordinate system: British National Grid; Datum: OSGB 1936  
 Data sources: © Crown copyright and database rights 2026 Ordnance Survey 0100031673. Sources: Esri, TomTom, Garmin, FAO, NOAA, USGS, © OpenStreetMap contributors, and the GIS User Community, Contains OS data © Crown Copyright and database right 2026. Contains data from OS Zoomstack

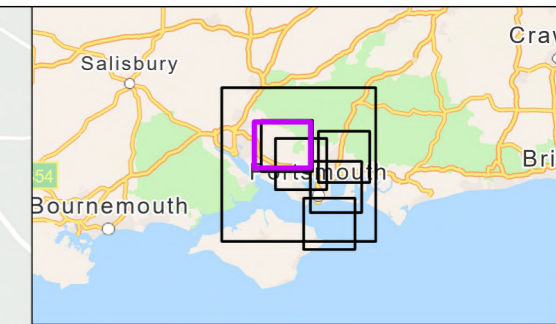
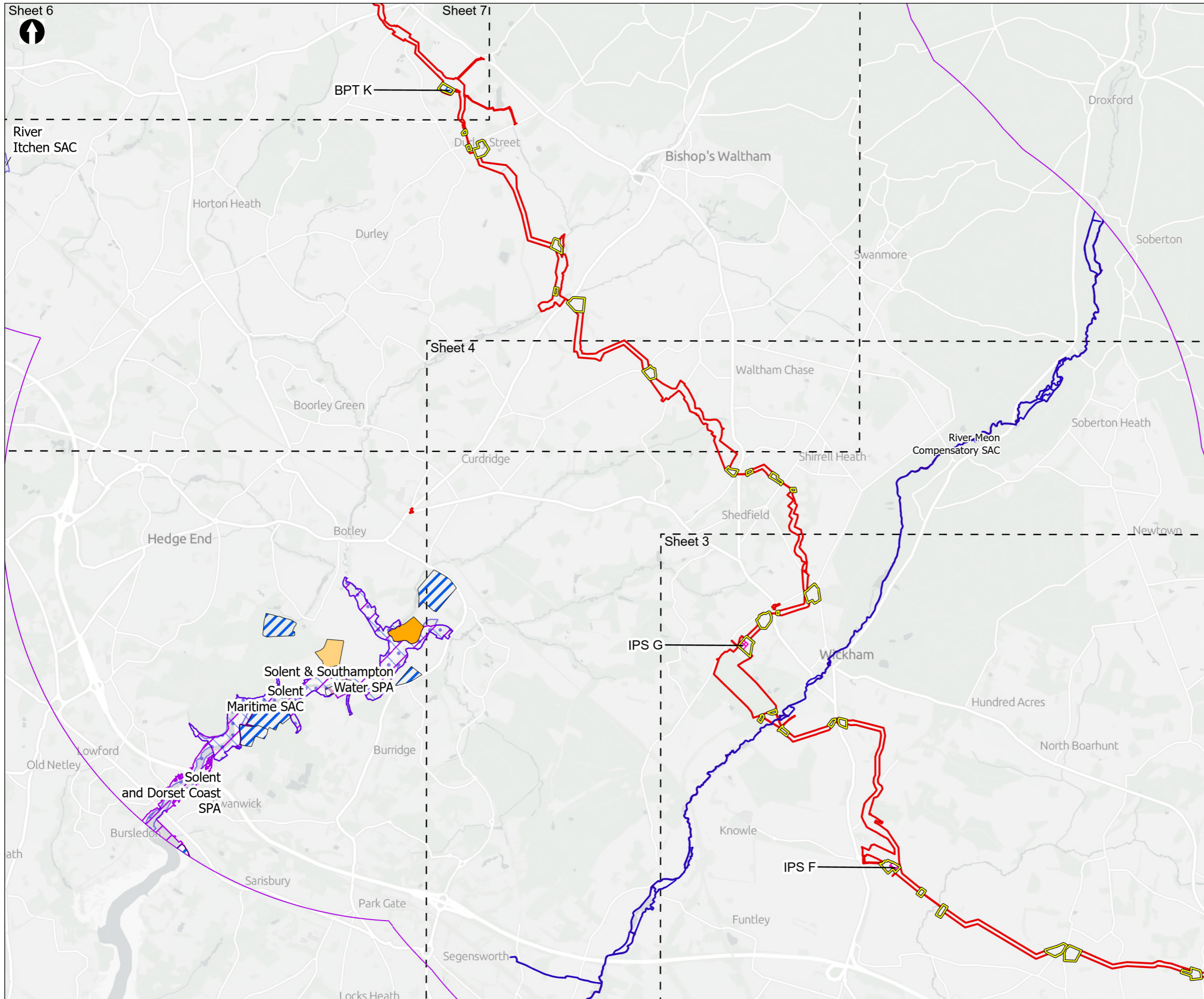
PROJECT TITLE  
 Hampshire Water Transfer and Water Recycling Project



Figure 8.2  
 Internationally designated sites within the desk study area  
 Sheet 4 of 8

Drawn <b>MW</b>	GIS Checked <b>DL</b>	Checked <b>MP</b>	Approved <b>AK</b>
Scale at A3 <b>1:45,000</b>	Status <b>Final</b>	Revision <b>05</b>	Security <b>STD</b>





- Order Limits
- Sheet Extent Boxes 1:40K
- Desk study area
- Construction Compounds
- Above Ground Plant**
- Break Pressure Tank
- Intermediate Pumping Station
- Designated Sites**
- Special Areas of Conservation (SAC)
- Special Protection Areas (SPA)
- Ramsar Sites
- River Meon Compensatory SAC Habitat
- Solent Waders Brent Goose Strategy**
- Primary Support Area
- Secondary Support Area
- SPA Site
- Low Use Site

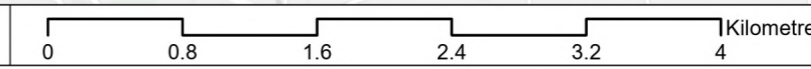
Coordinate system: British National Grid; Datum: OSGB 1936  
 Data sources: © Crown copyright and database rights 2026 Ordnance Survey 0100031673. Sources: Esri, TomTom, Garmin, FAO, NOAA, USGS, © OpenStreetMap contributors, and the GIS User Community, Contains OS data © Crown Copyright and database right 2026. Contains data from OS Zoomstack

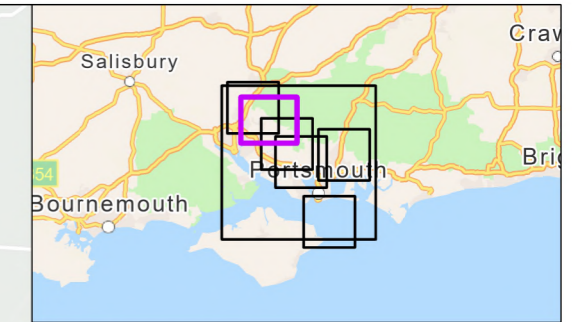
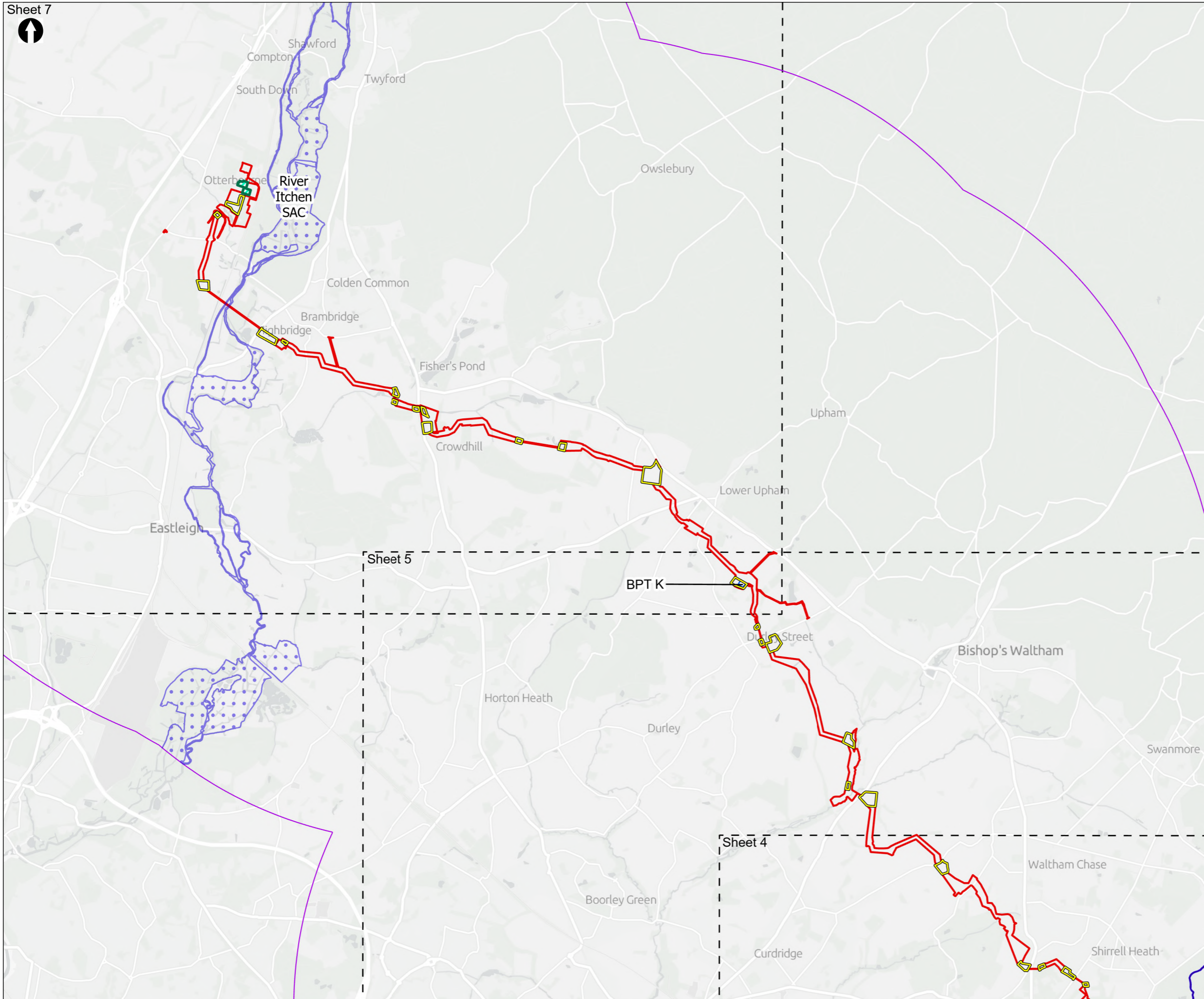
PROJECT TITLE  
 Hampshire Water Transfer and Water Recycling Project



Figure 8.2  
 Internationally designated sites within the desk study area  
 Sheet 5 of 8

Drawn <b>MW</b>	GIS Checked <b>DL</b>	Checked <b>MP</b>	Approved <b>AK</b>
Scale at A3 <b>1:45,000</b>	Status <b>Final</b>	Revision <b>05</b>	Security <b>STD</b>





**Order Limits**  
 Order Limits

**Sheet Extent Boxes 1:40K**  
 Sheet Extent Boxes 1:40K

**Desk study area**  
 Desk study area

**Construction Compounds**  
 Construction Compounds

**Limits of Deviation for Otterbourne INNS Treatment Plant**  
 Limits of Deviation for Otterbourne INNS Treatment Plant

**Above Ground Plant**  
 Break Pressure Tank

**Designated Sites**  
 Special Areas of Conservation (SAC)  
 River Meon Compensatory SAC Habitat

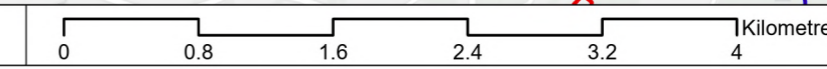
Coordinate system: British National Grid; Datum: OSGB 1936  
 Data sources: © Crown copyright and database rights 2026 Ordnance Survey 0100031673. Sources: Esri, TomTom, Garmin, FAO, NOAA, USGS, © OpenStreetMap contributors, and the GIS User Community, Contains OS data © Crown Copyright and database right 2026. Contains data from OS Zoomstack

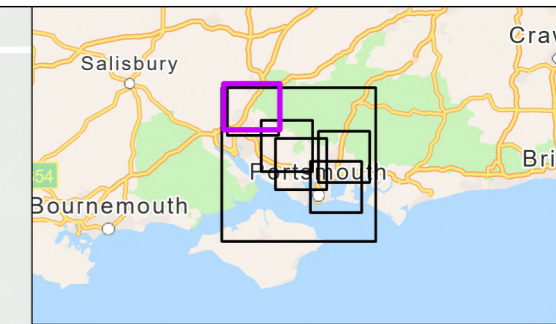
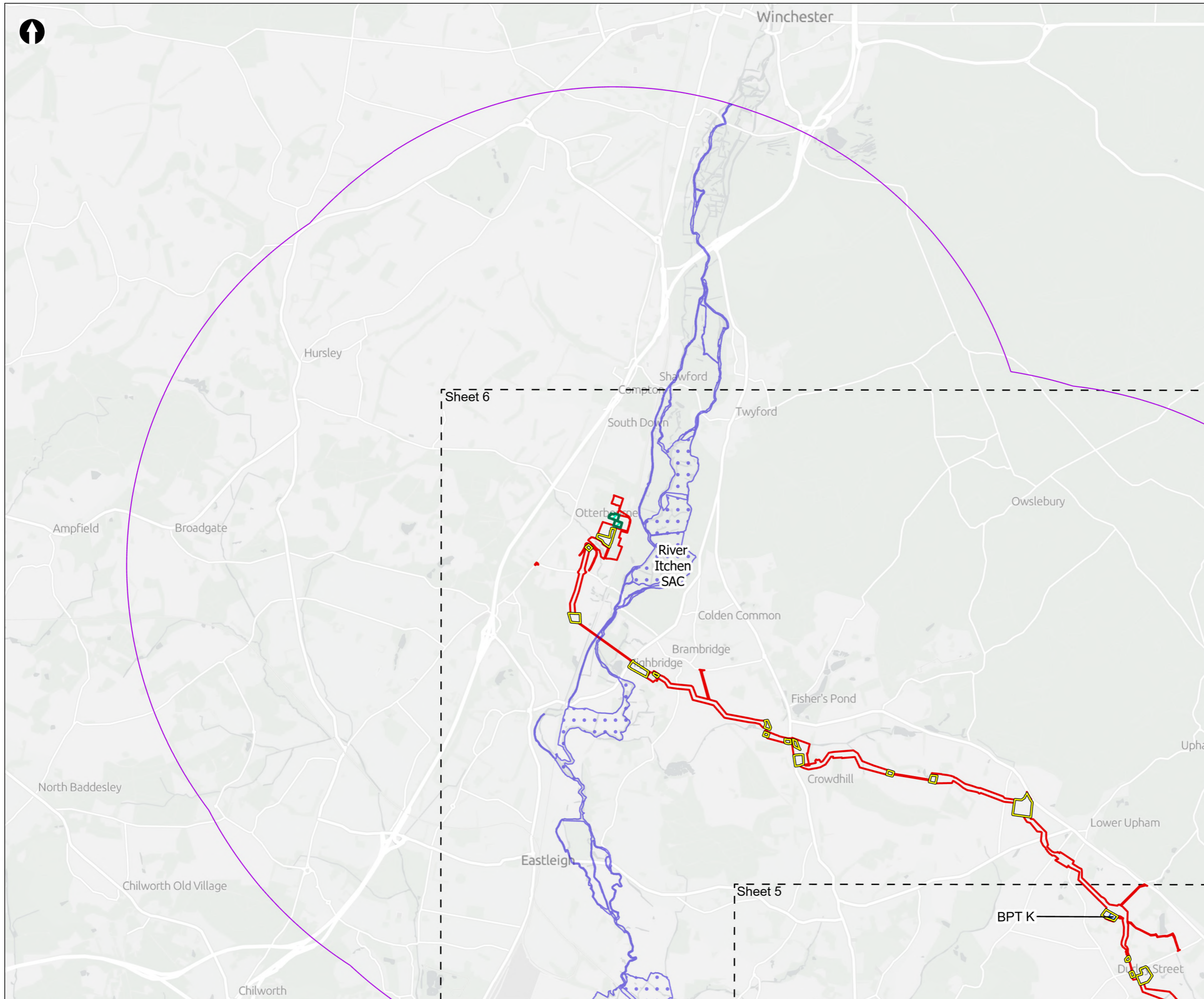
PROJECT TITLE  
 Hampshire Water Transfer and Water Recycling Project



Figure 8.2  
 Internationally designated sites within the desk study area  
 Sheet 6 of 8

Drawn <b>MW</b>	GIS Checked <b>DL</b>	Checked <b>MP</b>	Approved <b>AK</b>
Scale at A3 <b>1:45,000</b>	Status <b>Final</b>	Revision <b>05</b>	Security <b>STD</b>





- Order Limits
- Sheet Extent Boxes 1:40K
- Desk study area
- Construction Compounds
- Limits of Deviation for Otterbourne INNS Treatment Plant
- Above Ground Plant**
- Break Pressure Tank
- Designated Sites**
- Special Areas of Conservation (SAC)

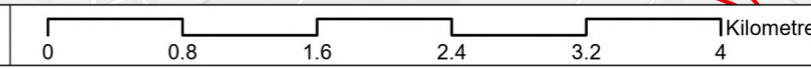
Coordinate system: British National Grid; Datum: OSGB 1936  
 Data sources: © Crown copyright and database rights 2026 Ordnance Survey 0100031673. Sources: Esri, TomTom, Garmin, FAO, NOAA, USGS, © OpenStreetMap contributors, and the GIS User Community, Contains OS data © Crown Copyright and database right 2026. Contains data from OS Zoomstack

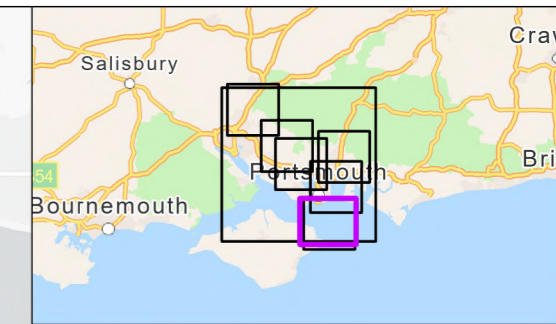
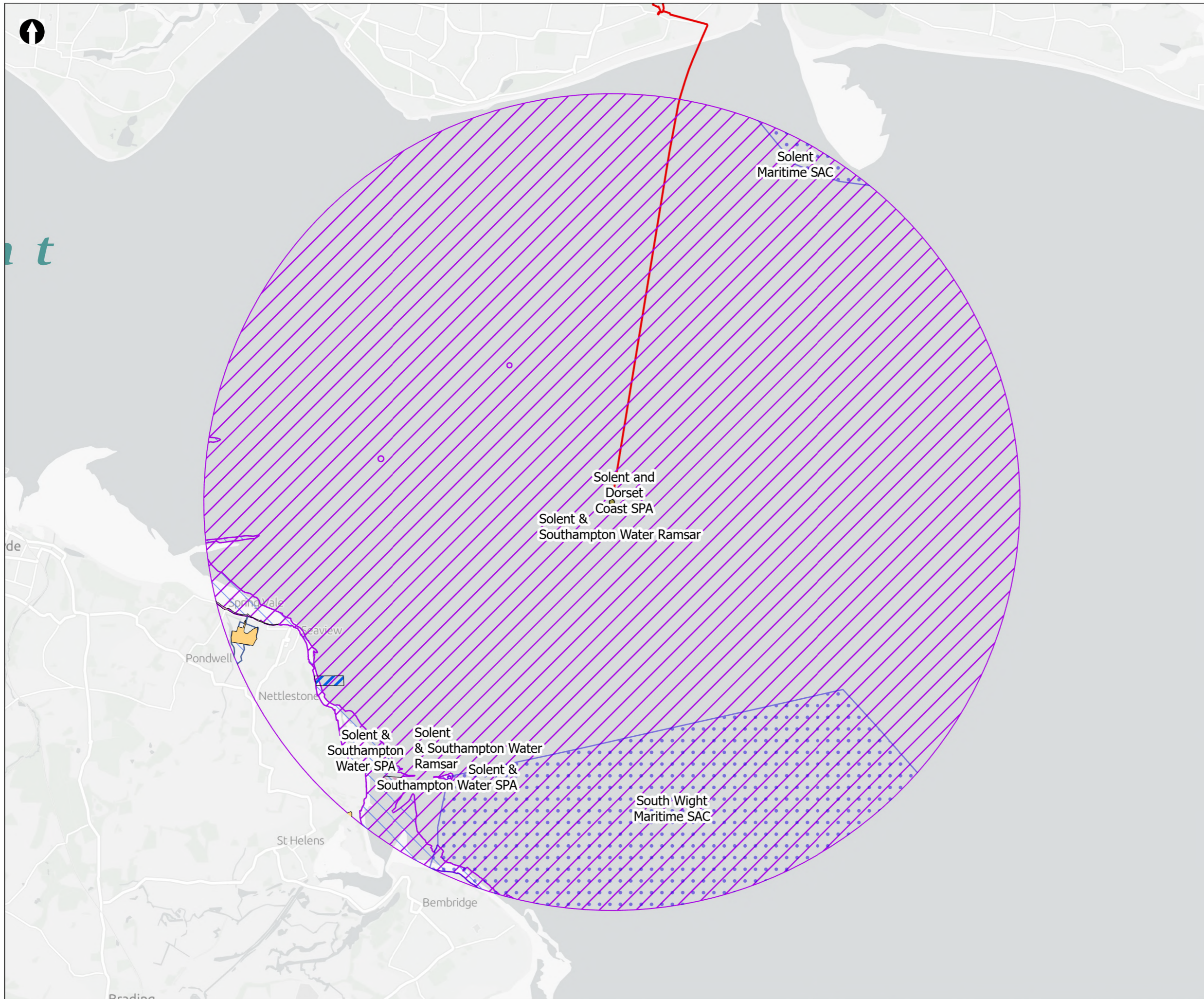
PROJECT TITLE  
 Hampshire Water Transfer and Water Recycling Project



Figure 8.2  
 Internationally designated sites within the desk study area  
 Sheet 7 of 8

Drawn <b>MW</b>	GIS Checked <b>DL</b>	Checked <b>MP</b>	Approved <b>AK</b>
Scale at A3 <b>1:45,000</b>	Status <b>Final</b>	Revision <b>05</b>	Security <b>STD</b>





Order Limits  
 Sheet Extent Boxes 1:40K  
 Desk study area  
 Long Sea Outfall discharge point

**Designated Sites**

Special Areas of Conservation (SAC)  
 Special Protection Areas (SPA)  
 Ramsar Sites

**Solent Waders Brent Goose Strategy**

Secondary Support Area  
 SPA Site  
 Low Use Site

Coordinate system: British National Grid; Datum: OSGB 1936  
 Data sources: © Crown copyright and database rights 2026 Ordnance Survey 0100031673. Sources: Esri, TomTom, Garmin, FAO, NOAA, USGS, © OpenStreetMap contributors, and the GIS User Community, Contains OS data © Crown Copyright and database right 2026. Contains data from OS Zoomstack

PROJECT TITLE  
 Hampshire Water Transfer and Water Recycling Project



Figure 8.2  
 Internationally designated sites within the desk study area  
 Sheet 8 of 8

Drawn <b>MW</b>	GIS Checked <b>DL</b>	Checked <b>MP</b>	Approved <b>AK</b>
Scale at A3 <b>1:45,000</b>	Status <b>Final</b>	Revision <b>05</b>	Security <b>STD</b>

